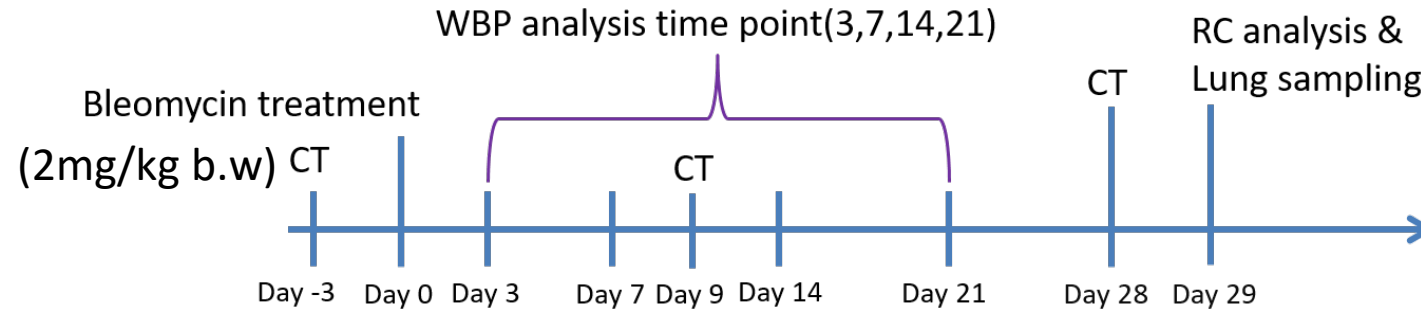


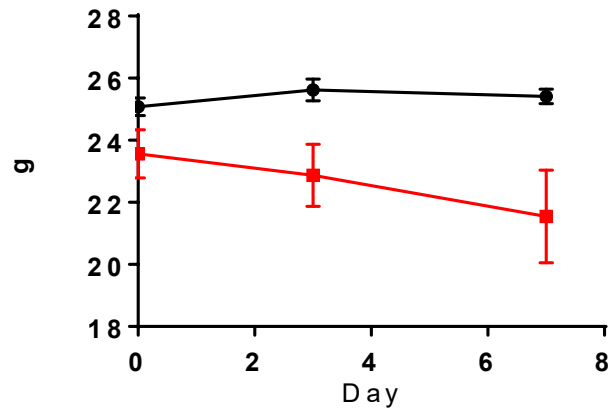
Bleomycin引起肺纖維化動物模式

- **Bleomycin**: causes alveolar cell damage and subsequent pulmonary inflammation
- Intratracheal administration
- Microspray

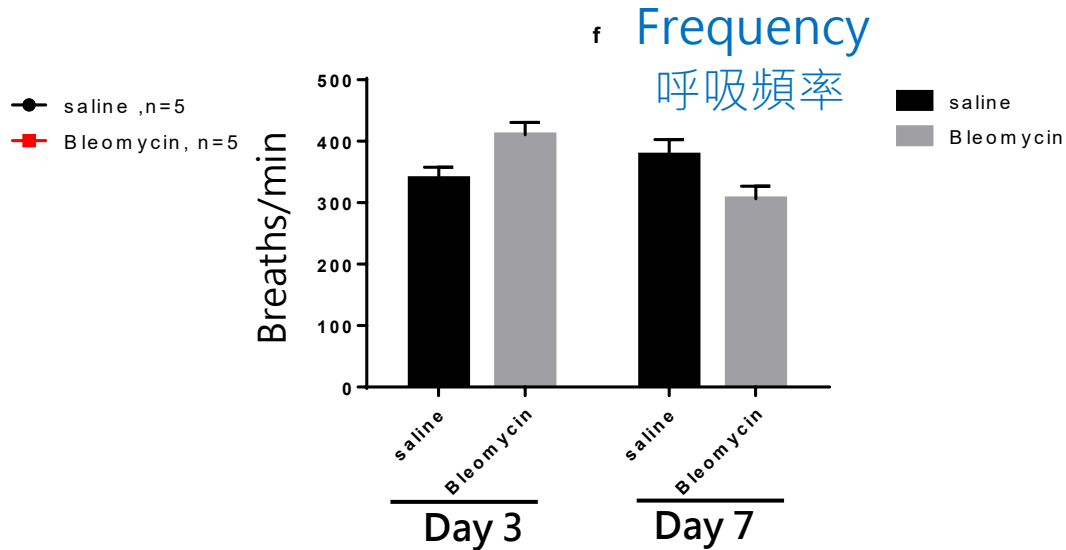


C57BL/6JNarl male mice

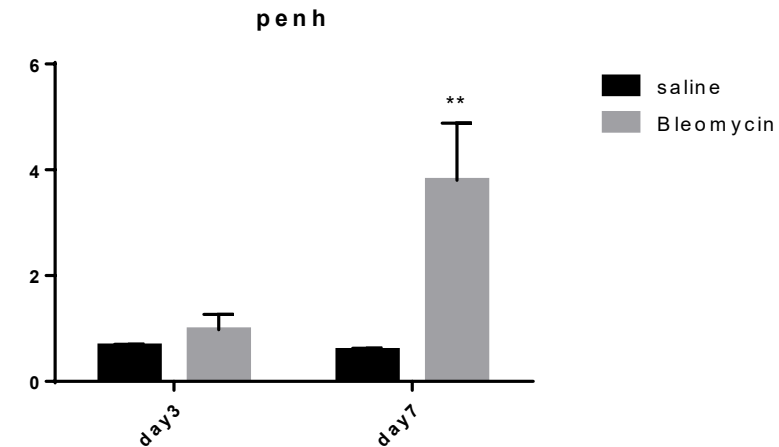
body weight



Day 7 (Whole Body plethysmography; WBP)



呼吸道阻力
Respiration resistance

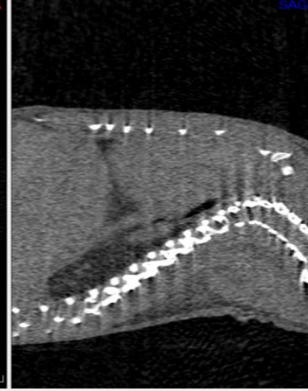
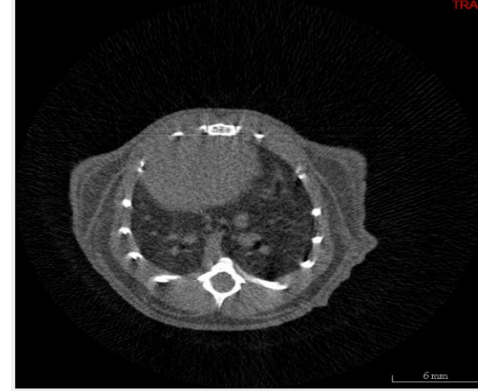
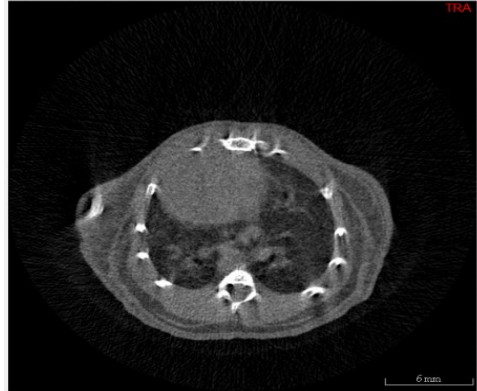
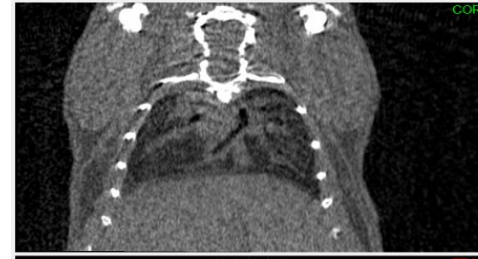


Saline

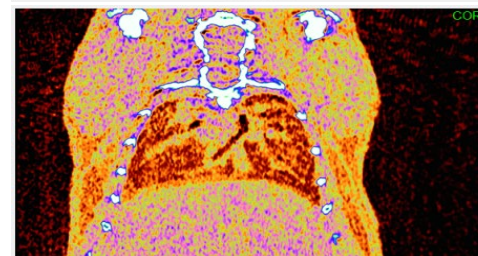
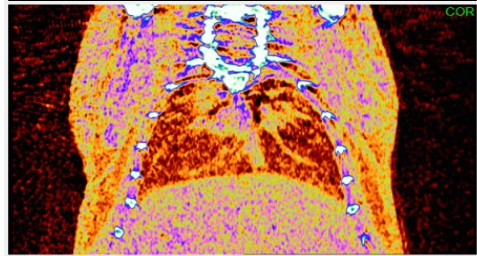
Day 0

Bleomycin

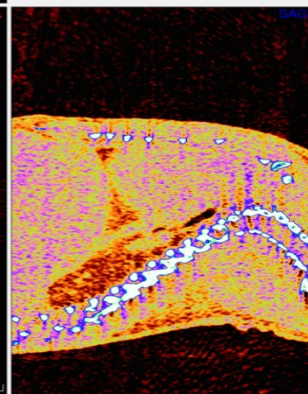
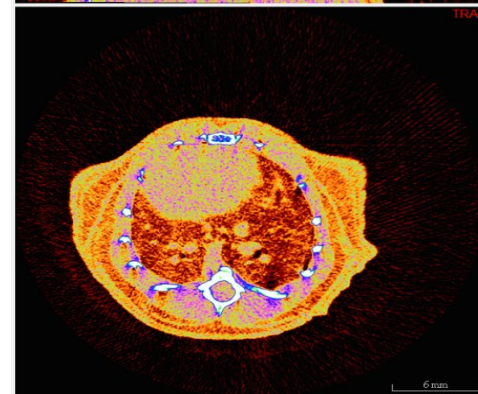
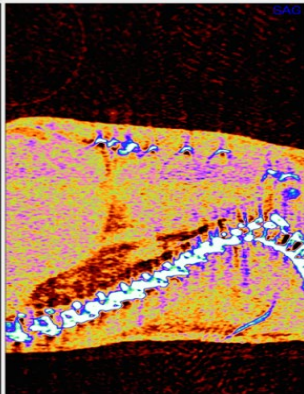
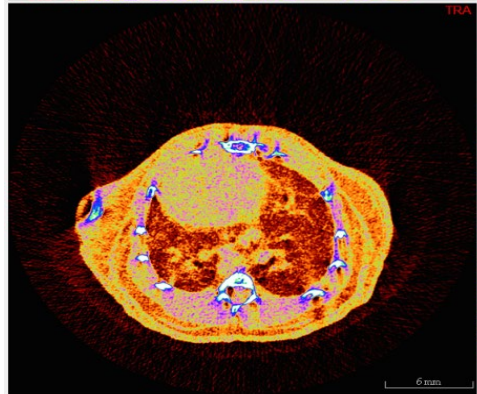
μ CT



横切面



縦切面

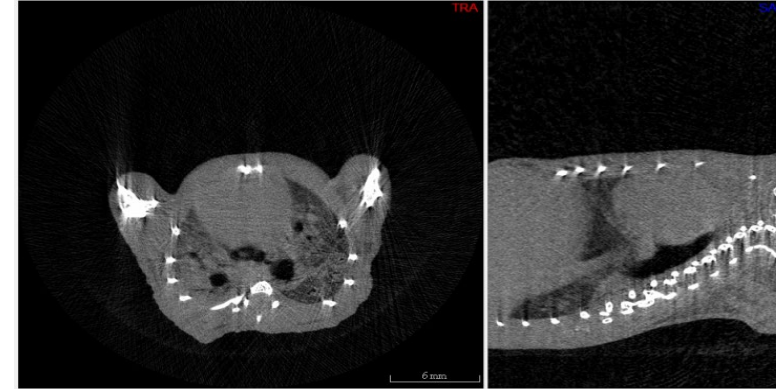
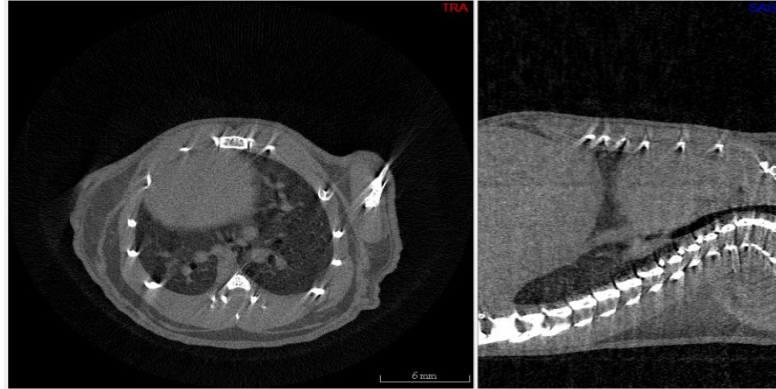
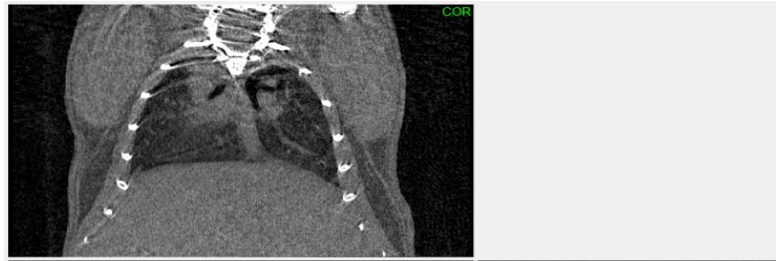


Saline

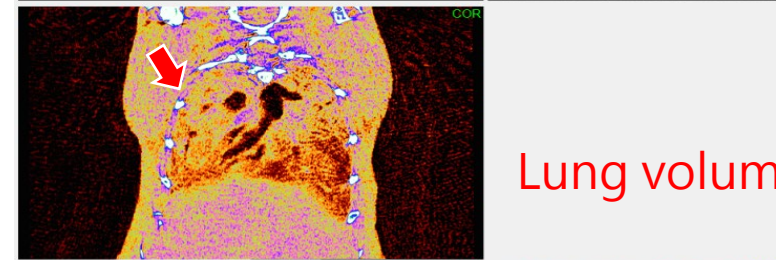
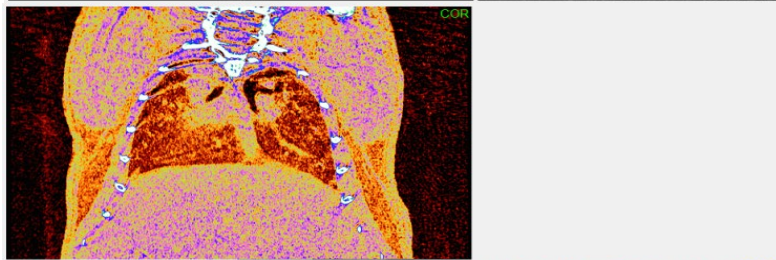
Day 9

Bleomycin

μ CT



横切面



Lung volume ↓

縦切面

